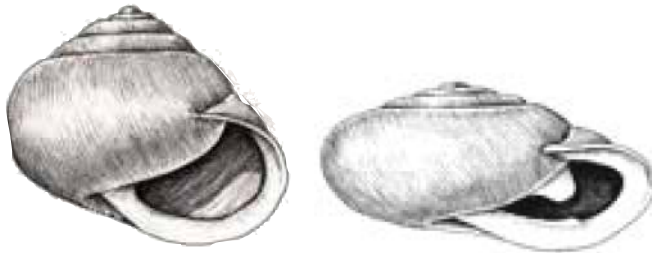


# Snail Characteristics

1. Determine the **SHAPE** of the shell.



*Heliciform*

*Depressed Heliciform*

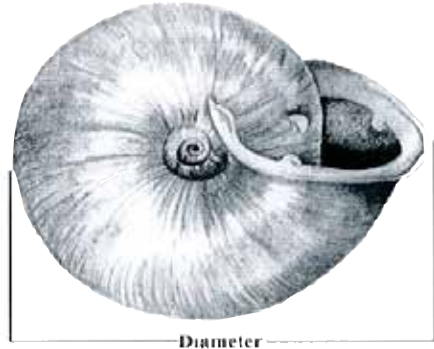


*Pupa shape*



*Beehive shape*

2. **MEASURE** shell diameter or height.



Diameter

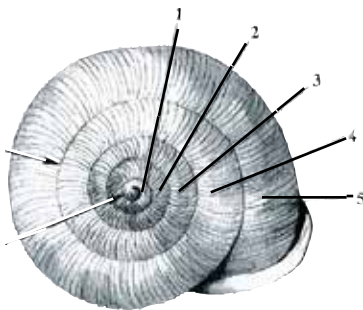


Height



*Beehive and Pupa*

3. Count the number of **WHORLS**.



4. Is the **LIP** simple or reflected?

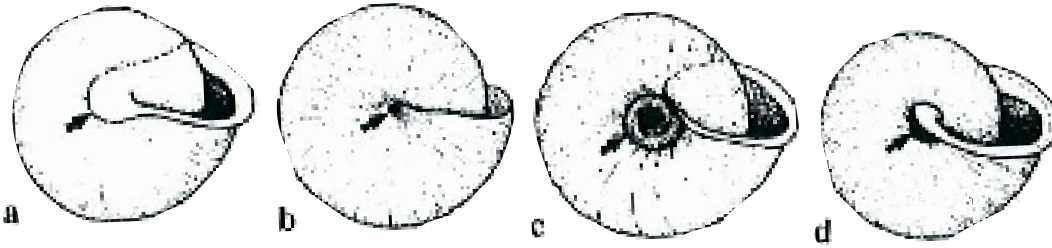


*Simple lip*



*Reflected lip*

5. Look at the middle underside of the shell. What kind of **BELLY BUTTON** does it have?



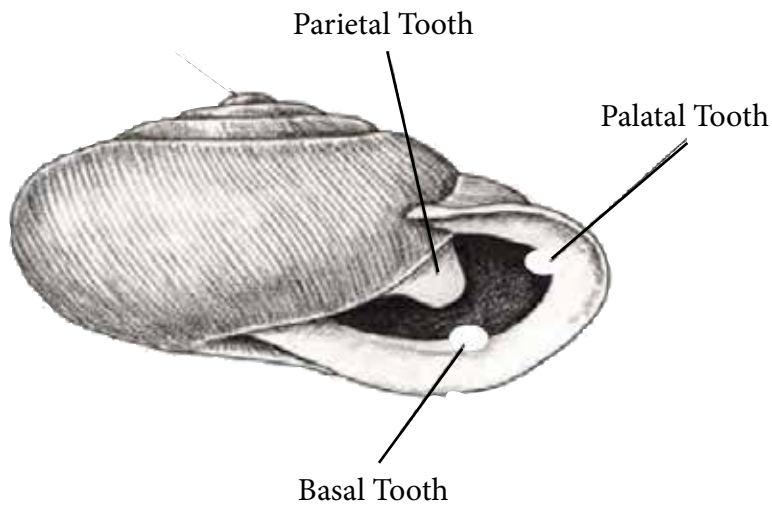
*A - Imperforate  
closed*

*B - Perforate  
small opening*

*C - Umbilicate  
wide opening*

*D - Rimate  
partially covered*

6. Label any **TEETH**.



7. Are there visible **RIBS** or transverse striae on the shell surface or is it smooth?



*Ribs*



*Transverse striae*